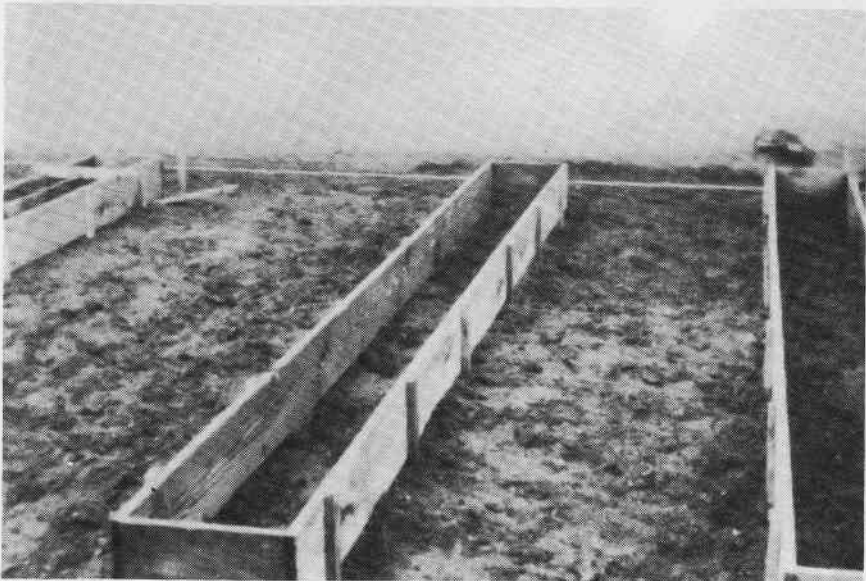


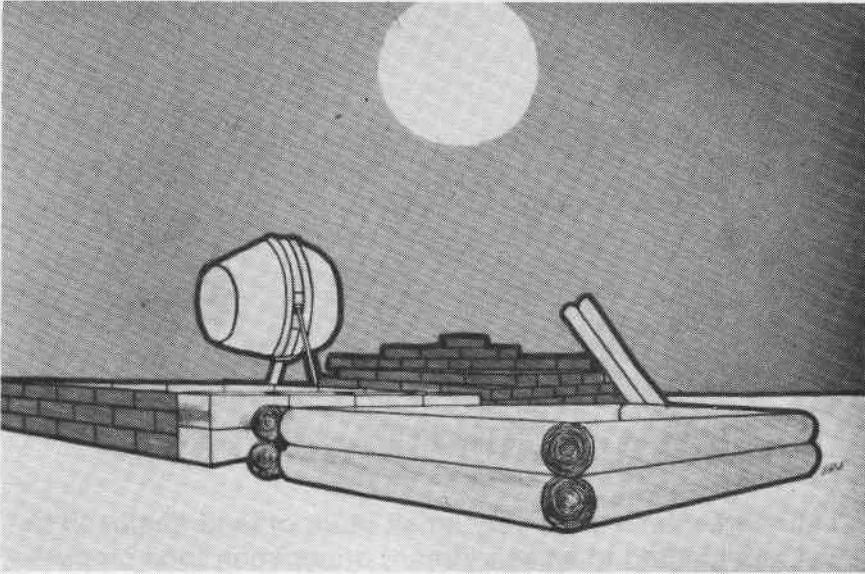
## What Are Mini Grow-Boxes?

Mini grow-boxes are very small plots of land enclosed in frames and planted to an assortment of common food crops—primarily vegetable crops.

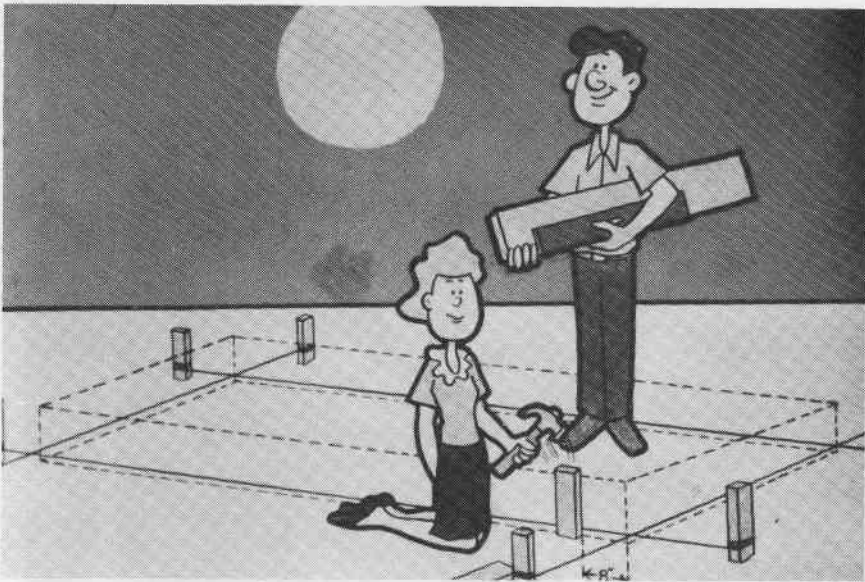
Mini grow-boxes can be made of many kinds of materials such as lumber, straight logs, brick, cement blocks, rocks, and other non-toxic materials.



*Frames can be made of brick, cement, or blocks.*

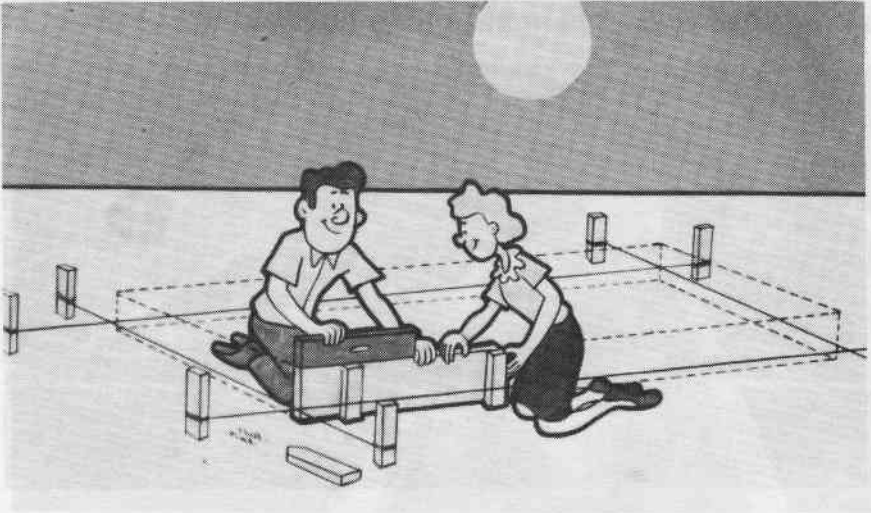


*One type mini-box construction.*



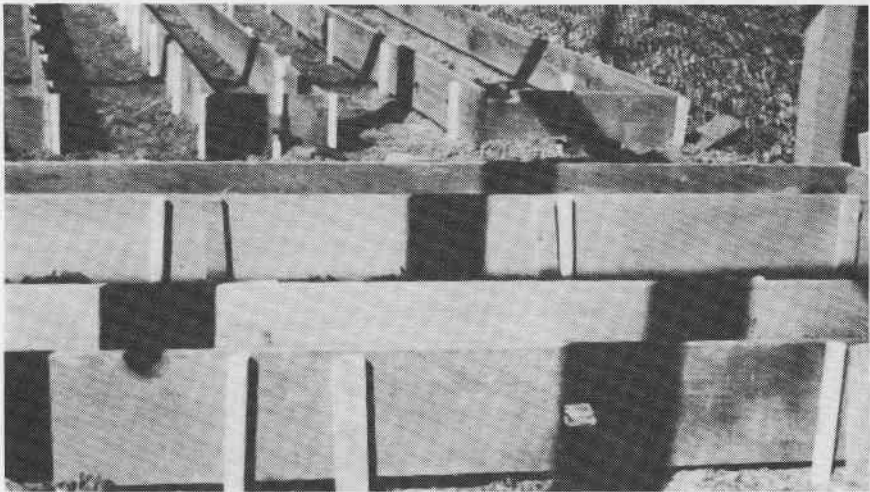
*The area within the boxes must be level.*

The mini frames vary in length between 1 and 30 feet. They are 1 to 2 feet wide, and 8 to 18 inches deep.



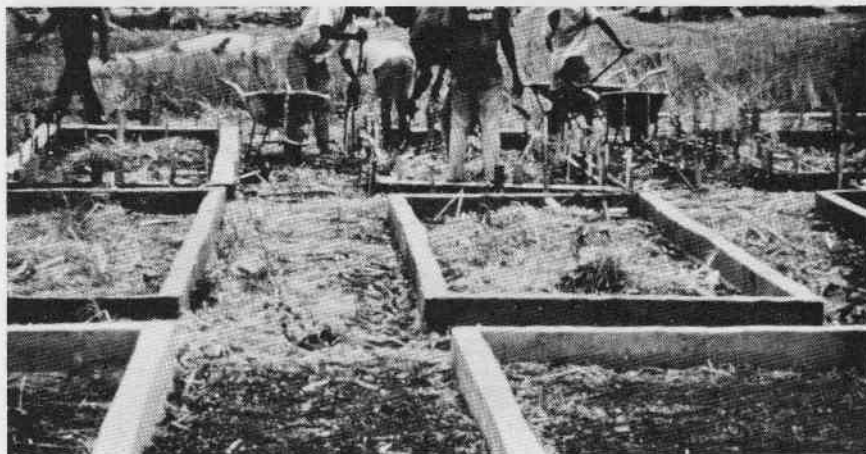
*Both the length and width are constructed level.*

During construction, both the width and the length are made level. The top of the frame is usually 8 inches above the surface of the ground.



*Mini grow-boxes are usually 8 inches deep.*

When lumber is used, it is usually 1 or 2 inches in thickness. If cement is used, the recommended thickness is 3 to 4 inches and 8 inches deep. Sometimes cement is more desirable than wood. The frames have no bottoms and no lids!



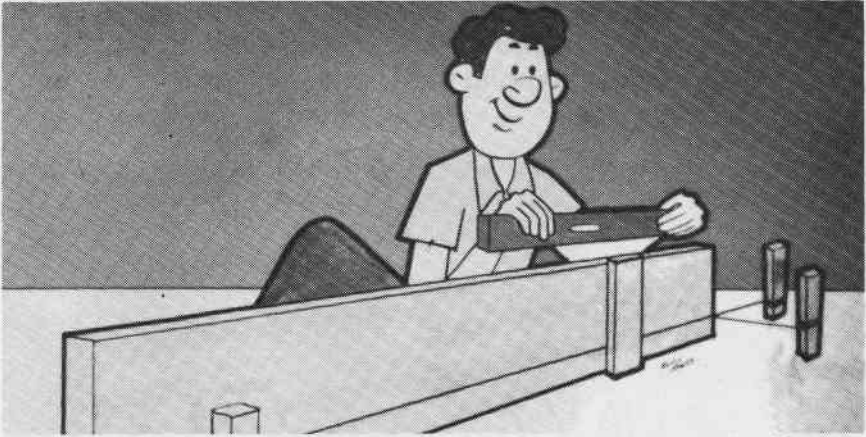
*Cement frames make good mini grow-boxes.*

The mini-boxes can be constructed almost anywhere—on steep hillsides, over rocks, over alkali and hard clay soils, over swamp land, etc.



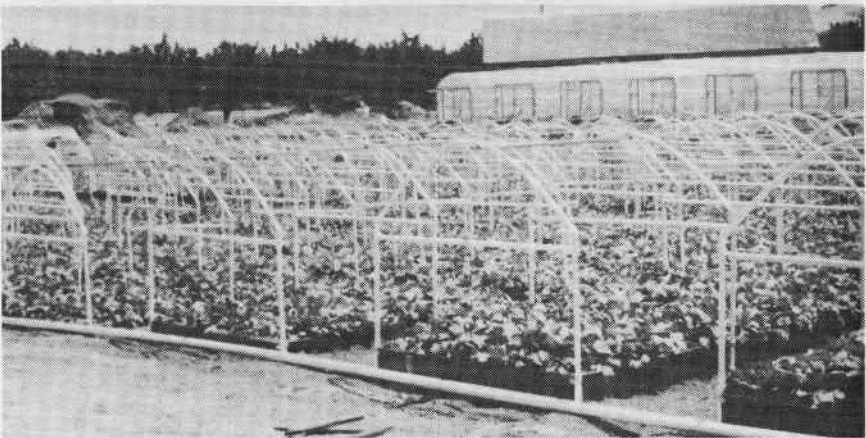
*Level hillside plots make good mini grow-box areas.*

Nearly any type of land or irregular terrain is suitable. But remember, each mini-frame must be level! If necessary, plots the size of the mini-frames should be cleared and made level—including the walkways between the frames.



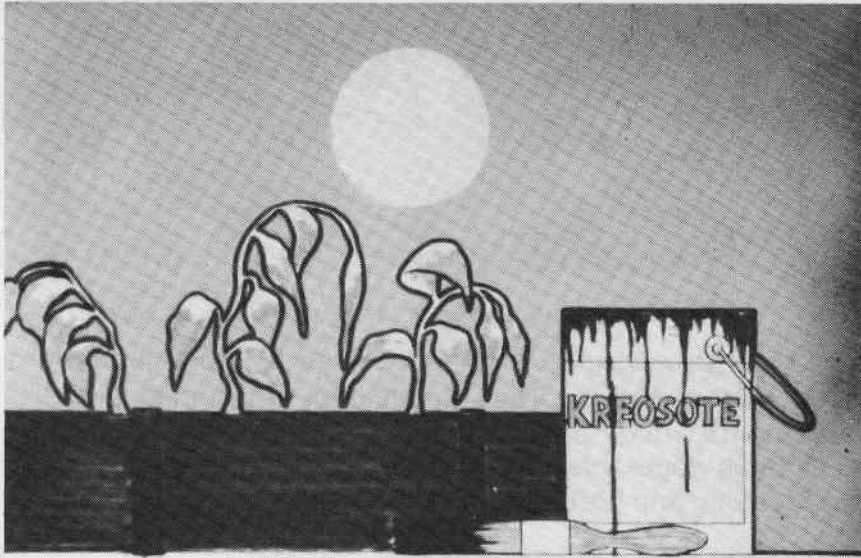
*The mini-box area must be level.*

Mini grow-boxes can also be used for commercial production of vegetables. They are ideal for city homes, high-rise apartments, trailer parks, carports, etc., and are used to furnish fresh vegetables for the family. They are also used in landscaping and horticultural arrangements.



*Grow-boxes in a commercial production.*

The materials for construction can be treated and painted to resist rotting and to improve their appearance. Wood preservatives such as paint and copper compounds and white-wash, made from burnt lime, are safe to use. But *do not* use kreosote! It is toxic to plants and once absorbed by the plant roots the growth of the plant is permanently retarded. (Note: Old railroad ties—treated with kreosote—are an exception. They are safe to use to build mini-boxes because of the many years of weathering.)



*Kreosote is toxic to plant roots.*